

ALL DIMENSIONS IN mm UNLESS STATED

THIRD ANGLE PROJECTION

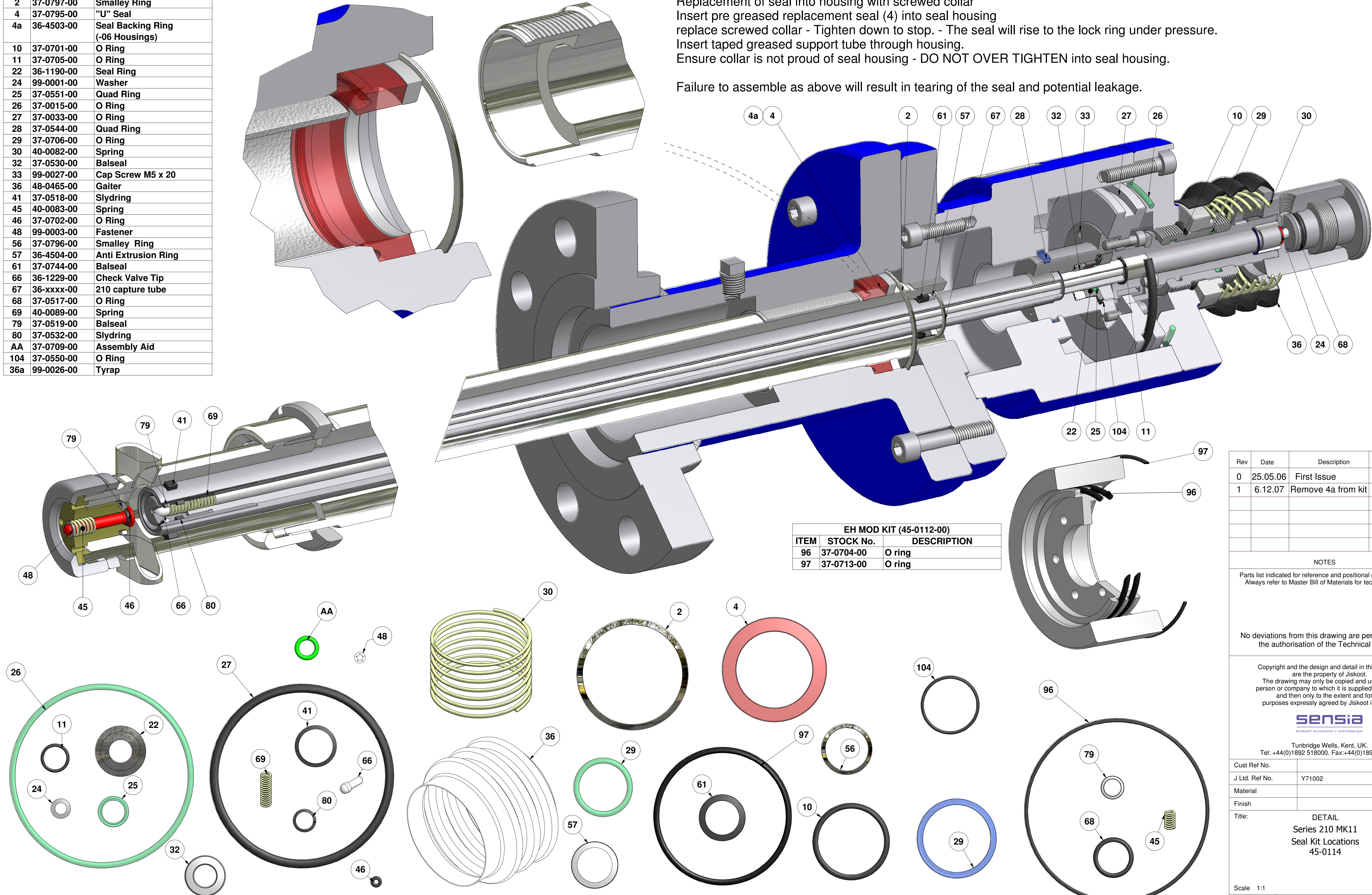
DO NOT SCALE - IF IN DOUBT, ASK

ITEM	STOCK No.	DESCRIPTION
2	37-0797-00	Smalley Ring
4	37-0795-00	"U" Seal
4a	36-4503-00	Seal Backing Ring (-06 Housings)
10	37-0701-00	O Ring
11	37-0705-00	O Ring
22	36-1190-00	Seal Ring
24	99-0001-00	Washer
25	37-0551-00	Quad Ring
26	37-0015-00	O Ring
27	37-0033-00	O Ring
28	37-0544-00	Quad Ring
29	37-0706-00	O Ring
30	40-0082-00	Spring
32	37-0530-00	Balseal
33	99-0027-00	Cap Screw M5 x 20
36	48-0465-00	Gaiter
41	37-0518-00	Slydring
45	40-0083-00	Spring
46	37-0702-00	O Ring
48	99-0003-00	Fastener
56	37-0796-00	Smalley Ring
57	36-4504-00	Anti Extrusion Ring
61	37-0744-00	Balseal
66	36-1229-00	Check Valve Tip
67	36-xxxx-00	210 capture tube
68	37-0517-00	O Ring
69	40-0089-00	Spring
79	37-0519-00	Balseal
80	37-0532-00	Slydring
AA	37-0709-00	Assembly Aid
104	37-0550-00	O Ring
36a	99-0026-00	Tyrap

SEAL HOUSING SEAL REPLACEMENT

Please ensure the support tube threads are wrapped with a *single* layer of masking tape and thoroughly greased prior to re-fitting.  
Replacement of seal into housing with screwed collar  
Insert pre greased replacement seal (4) into seal housing  
replace screwed collar - Tighten down to stop. - The seal will rise to the lock ring under pressure.  
Insert taped greased support tube through housing.  
Ensure collar is not proud of seal housing - DO NOT OVER TIGHTEN into seal housing.

Failure to assemble as above will result in tearing of the seal and potential leakage.



EH MOD KIT (45-0112-00)		
ITEM	STOCK No.	DESCRIPTION
96	37-0704-00	O ring
97	37-0713-00	O ring

Rev	Date	Description	Drn	Chkd	App'd
0	25.05.06	First Issue	NMc	PW	PW
1	6.12.07	Remove 4a from kit	NMc	PW	PW

NOTES  
Parts list indicated for reference and positional guidance ONLY  
Always refer to Master Bill of Materials for technical details.

No deviations from this drawing are permitted without the authorisation of the Technical Director.

Copyright and the design and detail in this drawing are the property of Jiskoot.  
The drawing may only be copied and used by the person or company to which it is supplied by Jiskoot and then only to the extent and for the purposes expressly agreed by Jiskoot in writing.

**sensia**  
Rockwell Automation - Schlumberger  
Tunbridge Wells, Kent, UK.  
Tel: +44(0)1892 518000. Fax: +44(0)1892 518100

Cust Ref No.	
J Ltd. Ref No.	Y71002
Material	
Finish	

Title: **DETAIL**  
**Series 210 MK11**  
**Seal Kit Locations**  
**45-0114**

Scale 1:1		
Size <b>B</b>	Dwg No. <b>29174</b>	Rev. <b>1</b>

Under NO CIRCUMSTANCES modify by hand.