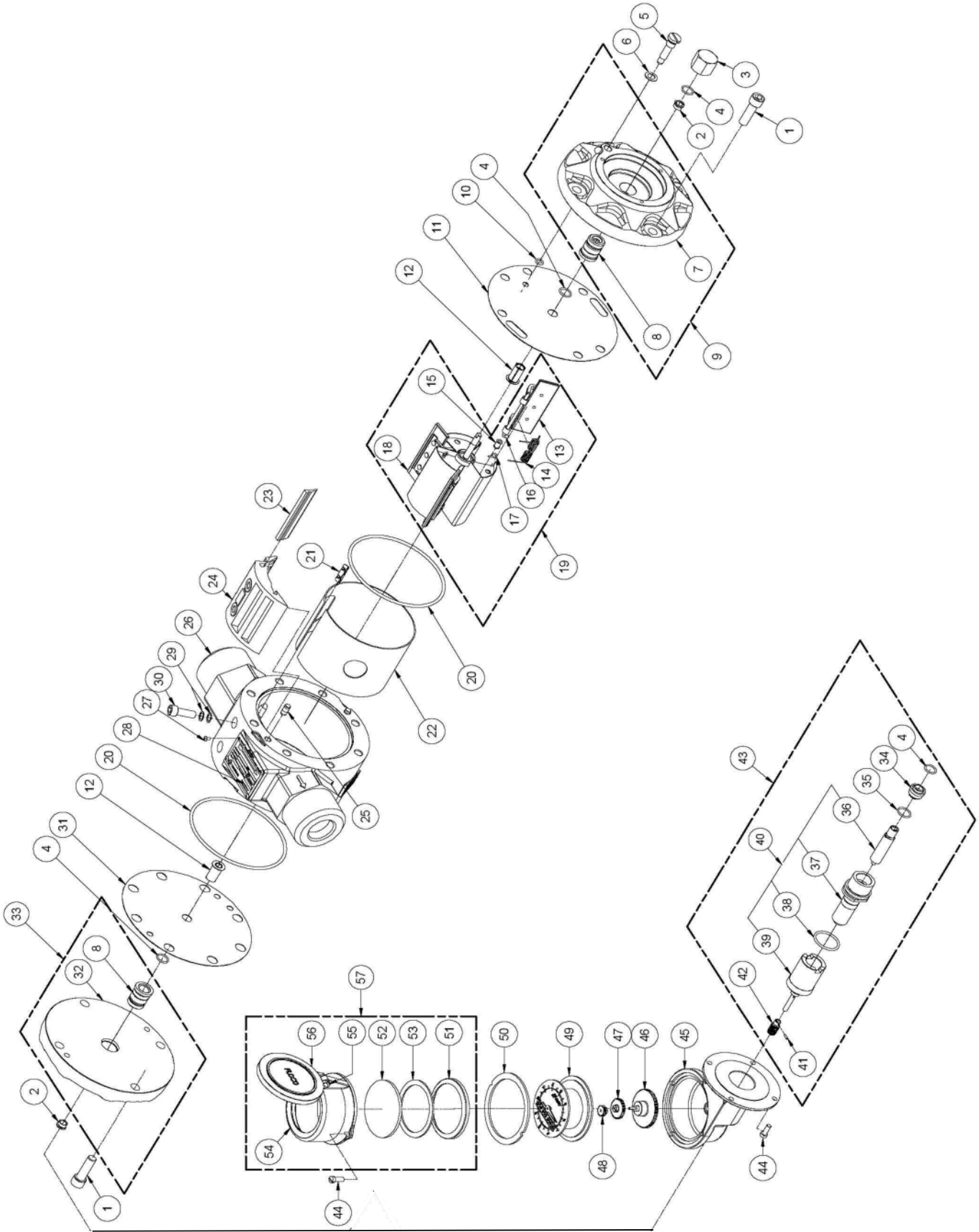


Part List

Page: 1 of 5
Effective: 1-Jun-15



ITEM	DESCRIPTION	PART NUMBER	PER UNIT
1	Body bolt - Qty 8 F500 , Qty. 16 F2500		
	Traditional - Standard Service 3/8-24 x 1 1/4 Soc Head.	9A-0220-1053J	8 or 16
	Traditional -NACE Service 3/8-24 x 1 1/4 Hex Head.	9A-1334-2300J	8 or 16
	High Pressure option F2500 Standard Service 7/16-20 X 1 1/4	9A-0220-9007J	16
	High Pressure option F2500 NACE Service 7/16-20X1 1/4 17-4 SS	9A-0210-9007J	16
2	Nut, Bearing, 3/8-32	9A-0000-12540	2
3	Nut, Blind	9A-0000-09150	1
4	Oring, Bearing Seal, 0.013:		4
	Buna-N	9A-0001-0146R	
	Viton	9A-0001-0087R	
	Teflon	9A-0001-0127R	
5	Alignment Plug (3/8"-24UNF) F500 only, not used on F2500	9A-0000-25080	1
6	Align Plug Gasket, 9/16 OD X 11/32 F500 only, not used on F2500	9A-0000-11160	1
7	See Item 9	-	-
8	Bushing, Sideplate, 316 SS	9A-2500-2112C	2
9	Sideplate & Bushing,		1
	Sampler side F500 only	9A-0500-1244B	
	Sampler side F2500 only (Cannot have a sampler mounted on it)	9A-0000-2500	
10	Oring, 0.010:		1
	Buna-N	9A-0001-0102R	
	Viton	9A-0001-0141R	
11	Wearplate, Sampler Side		1
	F500 only	9A-0022-76270	
	F2500 only	9A-0022-75270	
12	Rotor Bearing:		2
	Aluminum Bronze	9A-0000-25290	
	Carbon Graphite	9A-0000-24960	
	Meehanite	9A-0000-25280	
	Glass Filled Teflon	9A-0000-29470	
13	Rotor Hinge Assembly:		3
	Buna-N (1" and 2" Meters)	9A-0000-03610	
	Buna-N (3" Meters)	9A-0000-02520	
	Viton (1" and 2" Meters)	9A-0000-23340	
	Viton (1" and 2" Meters, CM Welded Rotor)	9A-50025400790	
	Viton (3" Meters)	9A-0000-25690	
	Teflon (1" and 2" Meters)	9A-0000-31460	
	Teflon (3" Meters)	9A-0000-31510	
14	Rotor Hinge Spring:		3 (6 for 3")
	Inconel	9A-0000-03620	
	Epoxy-Coated Inconel	9A-0003-62290	
15	Rotor Hinge Spring Grommet:		6 (12 for 3")
	Buna-N	9A-0000-30460	
	Viton	9A-0000-30470	
	Teflon	9A-0000-29580	
16	Rotor Hinge Pin:		3
	1" and 2" Meters	9A-0500-2030C	
	3" Meters	9A-0500-2031C	
17	Clip, Retaining (2")	9A-0500-2032C	3
	Keeper, Pin, Hing N/S, CM	9A-50025410123	
18	Hub Assembly-Not sold separately, see Item 19		1

Part List

ITEM	DESCRIPTION	PART NUMBER	PER UNIT
19	Rotor Assembly:		
	Riveted with Buna-N (1" and 2" Meters)	9A-0000-15320	
	Riveted with Buna-N (3" Meters)	9A-0000-15340	
	Riveted with Viton (1" and 2" Meters)	9A-0000-23260	
	SST Welded with Viton (1" and 2" Meters)	9A-0000-31960	
	Riveted with Viton (3" Meters)	9A-0000-25610	
	SST Welded with Viton (3" Meters)	9A-0000-32000	
	SST Welded with Teflon (1" and 2" Meters)	9A-0000-31530	
	SST Welded with Teflon (3" Meters)	9A-0000-31580	
20	Oring, 0.244:		2
	Buna-N	9A-0001-0167R	
	Viton	9A-0001-0171R	
21	Wedge	9A-0000-03020	1 (2 for 3")
22	Liner, 316 Stainless Steel		1
	1" and 2" Meters	9A-0000-03010	
	3" Meters	9A-0000-26560	
23	Bridge Seals (Set of 2):		1 (2 for 3")
	Buna-N	9A-0000-27910	
	Viton	9A-0000-03470	
	Teflon	9A-0000-31660	
24	Bridge: Seals extra		
	Delrin (1" and 2" Meters)	9A-0000-23700	
	Delrin (3" Meters) (Set of 2)	9A-0000-27620	
	316 SST (1" and 2" Meters)	9A-0000-22900	
	316 SST (3" Meters) (Set of 2)	9A-0000-28170	
25	Dowel Pin	9A-0000-03030	4
26	Meter Body: NPT connection, 3/8" bolting (traditional)		1
	1" & 2"	9A-0000-26310	
	3"	9A-0000-26360	
27	Drive Screw	9A-0000-03700	4
28	Name Plate - Not for sale as a loose part	9A-1334-2000G	1
29	Washer	9A-0000-23000	4 (8 for 3")
30	Bridge Screw	9A-0500-1347C	2 (4 for 3")
31	Wearplate, Register Side	9A-0022-75270	1
32	See Item 33	-	
33	Sideplate & Bushing, Register		
	Sampler side F500 only	9A-0500-1242B	
	Sampler side F2500 only	9A-0000-25020	



**FLOCO F500/F2500 SERIES
POSITIVE DISPLACEMENT METERS**

Page: 4 of 5
Effective: 1-Jun-15

Part List

ITEM	DESCRIPTION	PART NUMBER	PER UNIT
34	Bushing	9A-0000-29440	1
35	Oring, 0.014:		1
	Buna-N	9A-0001-0105R	
	Viton	9A-0001-0037R	
36	Inner Magnet Assembly	9A-0500-1027B	1
37	Housing Bearing Assembly	9A-0500-1026B	1
38	Oring, 0.120 Buna-N	9A-0001-0104R	1
39	Magnet Drive Assembly	9A-0500-1025B	1
40	Magnetic Coupling Assembly	9A-0500-1028B	
41	Pin, Worm	9A-0000-03240	1
42	Worm:		1
	12.5:1 Ratio, Steel	9A-0000-31920	
	20:1 Ratio, Steel	9A-0000-02550	
	40:1 Ratio, Steel	9A-0000-02540	
	40:1 Ratio, Zytel	9A-0002-54350	
43	Magnetic Drive Assembly		
	12.5:1, Buna (Not Generally Used Consult Engineering)	9A-0500-1030B	
	20:1, Buna	9A-0500-1031B	
	40:1, Buna	9A-0500-1032B	
	40:1, Zytel, Buna (Not Generally Used Consult Engineering)	9A-0500-1033B	
	12.5:1, Viton (Not Generally Used Consult Engineering)	9A-0500-1034B	
	20:1, Viton (Not Generally Used Consult Engineering)	9A-0500-1035B	
	40:1, Viton	9A-0500-1036B	Quick ship item
	40:1, Zytel, Viton (Not Generally Used Consult Engineering)	9A-0500-1037B	
	12.5:1, Teflon (Not Generally Used Consult Engineering)	9A-0500-1038B	
	20:1, Teflon (Not Generally Used Consult Engineering)	9A-0500-1039B	
	40:1, Teflon (Not Generally Used Consult Engineering)	9A-0500-1040B	
	40:1, Zytel, Teflon (Not Generally Used Consult Enç	9A-0500-1041B	
44	Screw, 10-32 UNFX1/2 Fil Hd, 18-8 SST		6
	With hole	9A-0000-16120	
	Without hole	9A-0114-0031J	
45	Register Adapter Assembly:		1
	For Magnetic Coupling Assembly (Standard)	9A-0000-2931OA	
	For Mechanical Coupling Assembly	9A-0000-02810	
46	Worm Gear Assembly:		1
	20:1 Ratio, Bronze	9A-0000-02570	
	40:1 Ratio, Zytel	9A-0002-56370	
	12.5:1 Ratio, Bronze	9A-0000-31920	
	40:1 Ratio, Steel	9A-0000-02560	
47	Calibration Drive Gear, Top-Specify Diameter and Teeth	See Popular Parts Price Sheet	1
48	Calibration Drive Gear, Bottom-Specify Diameter and Teeth	See Popular Parts Price Sheet	1
49	Register Assembly:		1
	U.S. Gallon, Non-Reset	9A-0000-30150	
	Barrel, 42 U.S. Gallon, Non-Reset	9A-0000-30590	
	Imperial Gallons, Non-Reset	9A-0000-31270	
	Litres, Non-Reset	9A-0000-31290	
	Cubic Meters, Non-Reset	9A-0000-31320	
	Barrel, 42 U.S. Gallon, Reset	9A-0000-23860	
	U.S Gallons, Reset	9A-0000-25740	
	Litres, Reset	9A-0000-25820	
	Cubic Meters, Reset	9A-0000-25840	



Part List

**FLOCO F500/F2500 SERIES
POSITIVE DISPLACEMENT METERS**

Page: 5 of 5
Effective: 1-Jun-15

ITEM	DESCRIPTION	PART NUMBER	PER UNIT
50	Register Gasket		1
	Non-Reset (no longer being supplied on new meters)	9A-0000-0253OA	
	Reset	9A-0000-25560	
51	Retaining Ring	9A-0000-12160	1
52	Register Glass	9A-0000-03370	1
53	Gasket	9A-0000-12140	1
54	Register Housing Asembly w/o glass & lid	9A-0000-33220	1
55	Register Lid Pin	9A-0000-02920	1
56	Register Lid	9A-1334-2003C	1
57	Register Housing Assembly		
	Non-Reset	9A-1334-2004B	1
	Reset	9A-0000-2387OA	1
XX	Fiber Gasket (2 Hole) Spacer between blind Pulser Housing and Sideplate	9A-1334-2513R	2

Elastomer Seal Kit, Viton		9A-0500-2070B
<u>Consists of:</u>	<u>Per Unit</u>	<u>Description</u>
9A-0000-11160	1	Align Plug Gasket, 9/16 OD X 1 2
9A-0001-0037R	1	Oring .014 Viton 1
9A-0001-0087R	4	Oring .013 Viton 1
9A-0001-0104R	1	Oring .120 Buna-N 1
9A-0001-0141R	1	Oring .010 Viton 2
9A-0001-0171R	2	Oring .244 Viton 6

Items Required to Plug PD Meter When Removing FRA or GLA Sampler:

ITEM	DESCRIPTION	PART NUMBER	PER UNIT
#5	Alignment Plug (3/8"-24UNF)	9A-0000-25080	1
#6	Align Plug Gasket, 9/16 OD X 11/32	9A-0000-11160	1
#3	Blind Nut	9A-0000-09150	1
#10	Oring .010 Viton	9A-0001-0141R	1