

February 5, 2018

Sensia LLC  
200 Westlake Park Blvd  
Houston  
TX 77079

## **GENERAL LETTER GL18 123 Scanner 3100 firmware upgrade and Programmable logic IDE installation notes**

It is with pride that Sensia offers significant new firmware capabilities for the Scanner 3100 including;

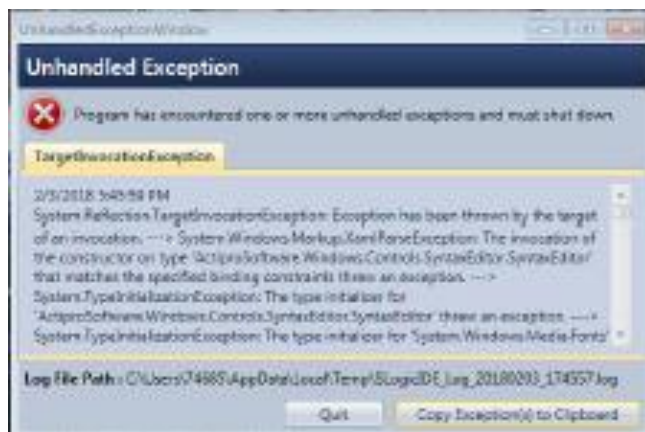
- Comprehensive Programmable logic control. Application development is performed within the IDE software
- Speed of sound computations for use with ultrasonic flow meters
- Steam, hot and chilled water calculations
- A PID controller with pulse output

### Firmware

The new firmware S3100\_G1\_3000.bin may be locally or remotely installed using ScanFlash Software 3.3.0. In this upgrade, the boot loader is replaced in the 3100 which prevents the 3100 being reverted to a previous firmware version.

### IDE Software

During the initial boot of the programmable logic Integrated Development Environment (IDE) program it is possible to receive this error.





The cause of this error is a result of a transitional Microsoft Windows change.

Replacing the file GlobalUserInterface.CompositeFont in the following two directory locations with the file of the same name as found on the Scanner 3100 webpage will correct this error.

C:\Windows\Microsoft.NET\Framework\v4.0.30319\WPF\Fonts  
C:\Windows\Microsoft.NET\Framework64\v4.0.30319\WPF\Fonts

As reinstallation may be required after receiving an error message replacement of GlobalUserInterface.CompositeFont in advance is recommended as a preventative action.

#### Other Software

To match S3100\_G1\_3000.bin firmware, Scanner Data Manager, ScanMap and ScanFlash software programs have also been upgraded and are available from the Scanner 3100 webpage.

Additional support is available at [ms-services@cameron.slb.com](mailto:ms-services@cameron.slb.com) or at 1 844 226 6327.

Your truly,

Don Hamill  
Product Manager

T: (403) 291-5888

