

+ CALDON Hydro Transducers

Hydro Transducers for Large Pipes and Buried Pipes

LARGE PIPES

8001 transducers and 8002 feed through assemblies are designed for installation on exposed pipes and penstocks from 42 in. (1.1 m) to 27 ft. (8.3 m) in diameter. This is a 1 MHz transducer suitable for high accuracy measurement in large pipes. The feed through assembly is designed to allow retraction and removal of the transducer while the pipe is under pressure. The 8001/8002 incorporates dual retaining pins and tamper resistant pin guard/retainer, features that are not available elsewhere.

8003 transducers and 8004 feed through assemblies are designed for installation on exposed pipes and penstocks from 20 in. (500 mm) to 48 in. (1,250 mm) in diameter. These assemblies are specifically for use in smaller pipes where protrusion of the transducers into the flow is minimized to maintain high measurement accuracy. The transducer still

retains a radial feed through for ease of installation on existing pipes. The feed through design utilizes a standard Thread-O-Let® fitting.

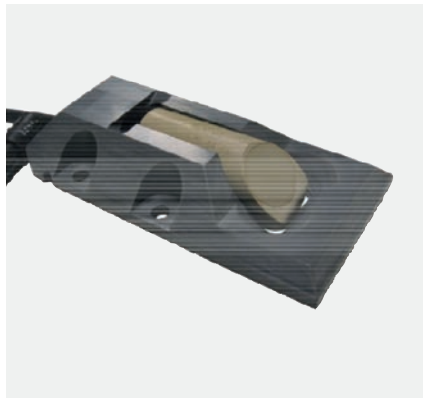
BURIED PIPES AND TUNNELS

8010 transducers and 8011 mount assemblies are designed for installation in buried pipes and tunnels from 5 ft. (1.5 m) to 25 ft. (7.7 m) in diameter. This is a 1 MHz transducer suitable for high accuracy measurement in large conduits.

8005 transducers and 8006 mount assemblies are designed for installation in buried pipes and tunnels from 8 ft. (2.5 m) to 35 ft (10.8 m) in diameter. The 8006 is a low-profile mount assembly designed to minimize flow disturbance over the transducers. The assembly incorporates a waterproof connector to allow transducer replacement without splicing or re-routing of cables.



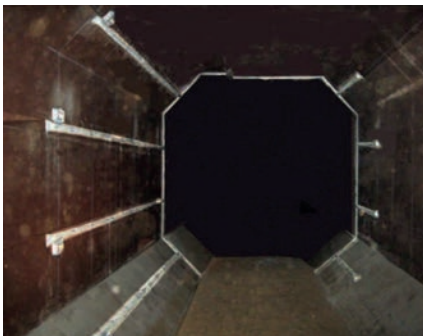
8003/8004 small pipe transducer/feed through assembly



8005/8006 internal mount transducer/mount assembly



8001/8002 large pipe transducer/feed through assembly with 2-pin retaining system



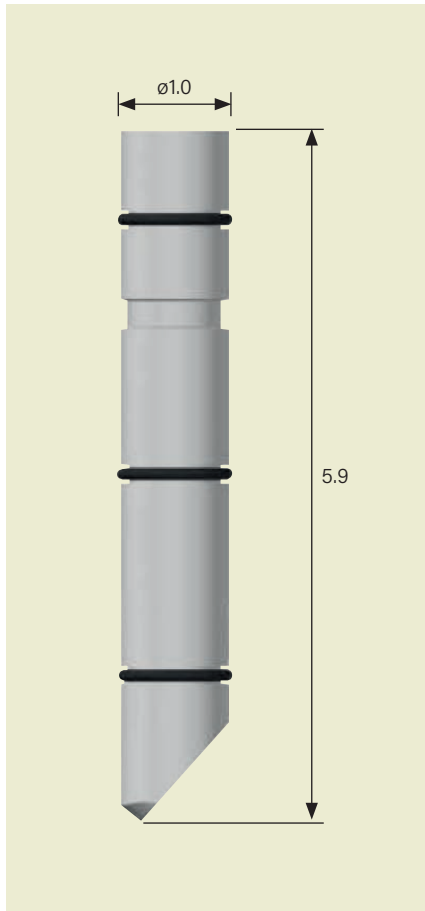
Model 8005-8006 internal mount transducers with conduit in 10 foot wide octagonal tunnel



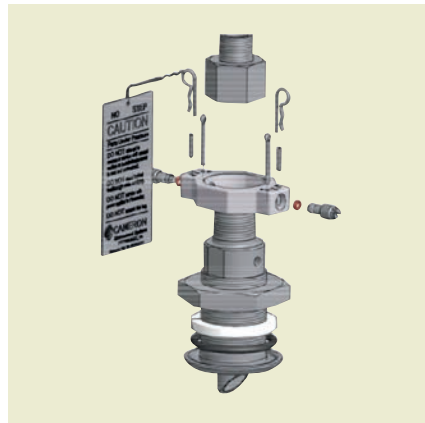
25 foot diameter penstock with transducer feed through with optional weld-o-let reinforcement



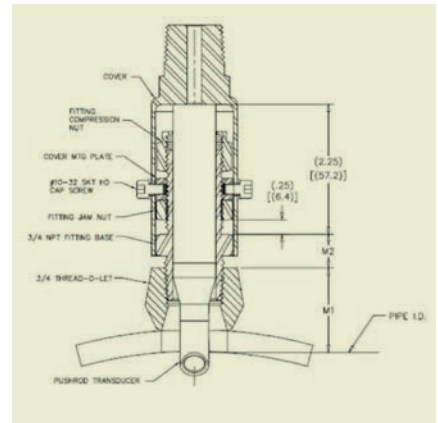
DIMENSIONS



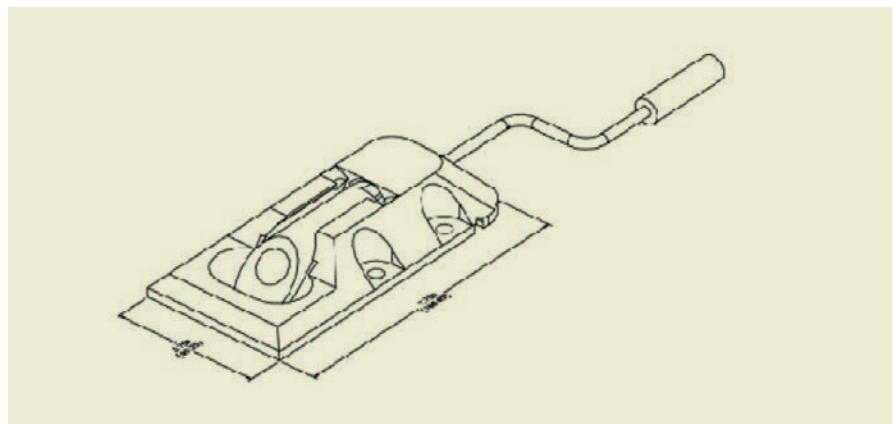
Transducer 8001



Transducer 8001 with Feed Through 8002



Transducer 8003 with Feed Through 8004



Transducer 8005 with Mounting Bracket 8006

SPECIFICATIONS

	8001	8002	8003	8004	8005	8006	8010	8011
Name	Transducer	Feed Through	Transducer	Feed Through	Transducer	Internal Mount	Transducer	Internal Mount
Service	Exposed Pipes	Exposed Pipes	Exposed Pipes	Exposed Pipes	Buried Pipes	Buried Pipes	Buried Pipes	Buried Pipes
Pipe Size	3.5 - 27 ft. (1.1 - 8.3 m)	3.5 - 27 ft. (1.1 - 8.3 m)	20 - 48 in. (500 - 1,250 mm)	20 - 48 in. (500 - 1,250 mm)	8 - 35 ft. (2.5 - 10.8 m)	8 - 35 ft. (2.5 - 10.8 m)	5 - 25 ft. (1.5 - 7.7 m)	5 - 25 ft. (1.5 - 7.7 m)
Frequency	1 MHz	—	1.6 MHz	—	500 KHz	—	1 MHz	—
Connection Type	—	—	—	Thread-O-Let	—	—	—	—
Materials of Construction	316SS Peek	316SS Aluminum	316SS Peek	316SS	Peek	PVC	Peek	PVC
Operating Temperature	0 - 60°C	0 - 60°C	0 - 60°C	0 - 60°C	0 - 60°C	0 - 60°C	0 - 60°C	0 - 60°C
Storage Temperature	-40°C - 85°C	-40°C - 85°C	-40°C - 85°C	-40°C - 85°C	-40°C - 85°C	-40°C - 85°C	-40°C - 85°C	-40°C - 85°C
Pressure	750 psi*	750 psi*	700 psi	700 psi	700 psi	700 psi	700 psi	700 psi

*Higher pressure versions available